



ISO 9001:2015 AND KHDA CERTIFIED COMPANY

DELPHI STAR TRAINING CENTER

Project Management Professional (PMP)

KHDA

هيئة المعرفة
والتنمية البشرية

KNOWLEDGE & HUMAN
DEVELOPMENT AUTHORITY



Dubai | Abu Dhabi | Sharjah | Muscat | Bahrain | Saudi | Qatar | India
Head office- Dubai



IN THIS BROCHURE

- About Us
- Vision and Mission
- About PMP
- PMP Eligibility
- Course Details
- Training Highlights
- Faculty
- Testimonials
- Corporates we have trained
- Reach us Online
- Get In Touch

Delphi has been established by qualified professionals to accomplish the growing needs of professionals by enhancing their job productivity in MENA region & India. The Institute is approved by the Knowledge and Human Development Authority (KHDA), Dubai, UAE. Delphi is also an approved training center by the professional accounting body, IMA (USA). We are also an ISO 9001:2015 certified company.



About Us



The Association of
Accountants and
Financial Professionals
in Business





VISION

- Respect for core values of ethics and integrity
- Recognition of faculty, who are the pillars of the institute

MISSION

- Offering customized result- oriented learning that is relevant and practical
- Providing high quality training and support services to our students and corporate clients.



About PMP

- Project Management Professional (PMP) is an internationally recognized professional designation offered by the Project Management Institute (PMI).
- Project Management Professional (PMP)® is the official certification for project managers. Certification tells employers and other professionals that you have a thorough understanding of the global language of project management. It tells them you are an expert in all aspects of project management—from project delivery to leading and directing cross-functional teams.
- Even if “project manager” isn’t part of your title, the PMP applies to anyone who helps bring a project to completion. Just like a CPA validates expertise for accountants, the PMP recognizes your ability to manage projects—and the hard work you’ve done so far.
- As of August 2019, there are 932,720 active PMP certified individuals and 300 chartered chapters across 218 countries and territories worldwide. The exam is based on the PMI Project Management Body of Knowledge.



PMP ELIGIBILITY

- **Earning your PMP Certification is a commitment, and that's why it is valuable. Before you apply, make sure you meet one of the following sets of PMP**
- **To apply for the exam, The Project Management Institute (PMI)® requires that you have either:**

A four-year degree (Bachelor's or Global degree), 4,500 hours leading or directing projects, and 35 hours of project management education

A Secondary Degree (High school diploma or equivalent), 7,500 hours leading or directing projects, and 35 hours of project management education



A black and white photograph of a woman with curly hair, wearing a dark long-sleeved shirt, sitting and working on a laptop. The laptop has an Apple logo. The background is a bright window with a view of a city. A semi-transparent grey box is overlaid on the left side of the image, containing the text 'Course Details' in a large, bold, black serif font.

Course Details

The exam covers 5 key areas in Project Management.
The percentages detail what percentage of the questions are covered in each area:

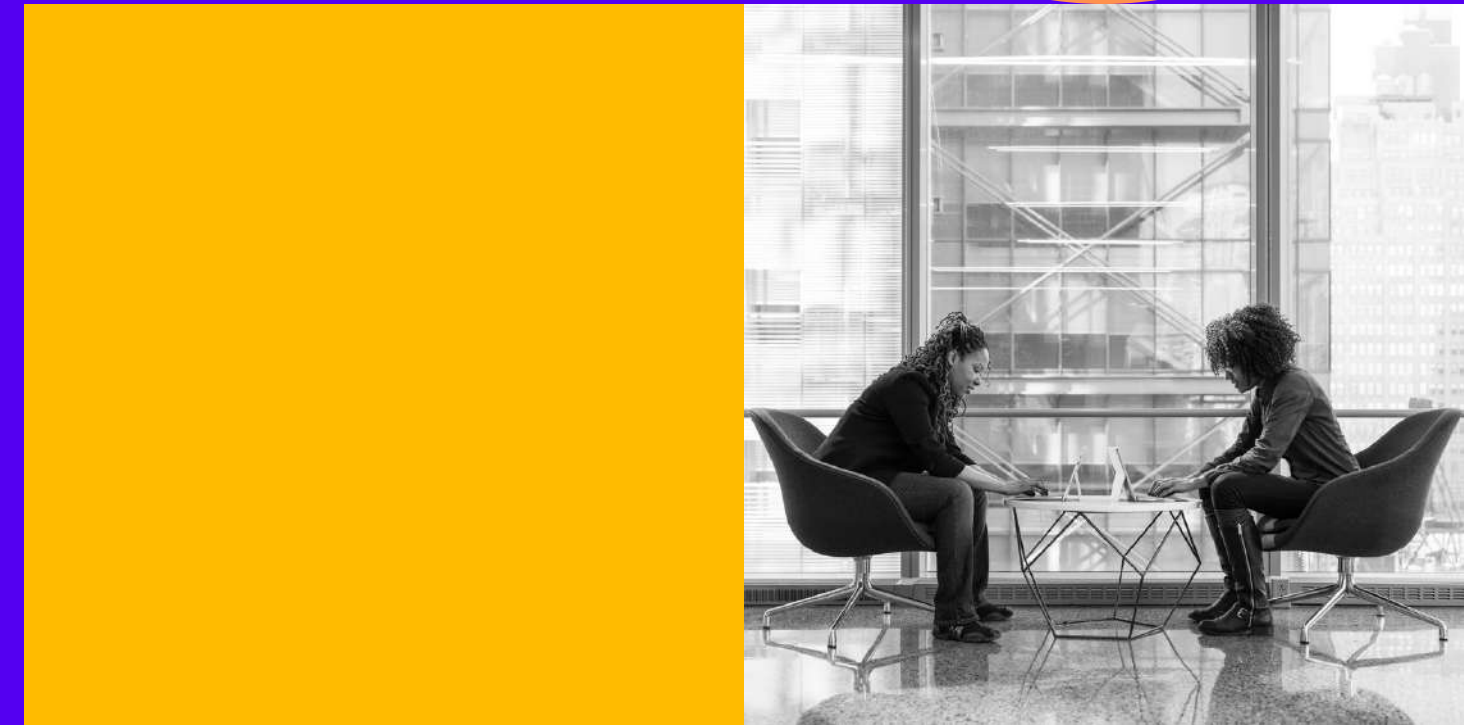
- Initiating (13%)
- Planning (24%)
- Executing (31%)
- Monitoring and Controlling (25%)
- Closing (7%)
- Total - 100%

The 10 Project Management Knowledge Areas:

- Project Integration Management
- Project Scope Management
- Project Time Management
- Project Cost Management
- Project Quality Management
- Project Human Resource Management
- Project Communications Management
- Project Risk Management
- Project Procurement Management
- Project Stakeholder Management

PMP Exam Question Format and Types

13The PMP exam is composed of 200 multiple-choice questions, which are distributed throughout the different project management domains of Initiating, Planning, Executing, Monitoring and Controlling and Closing. A student is allotted 4 hours to complete the exam. A student is scored based on only 175 of the PMP exam questions. To prepare for the PMP exam, you should familiarize yourself with different the PMP exam question format and types. Each PMP Exam question contains 4 choices, of which there is only one correct or best answer. Planning (24%)



TRAINING

HIGHLIGHTS

**Physical & practical
classroom training**

Online & practical training

**Pocket friendly and
affordable**

Unlimited Support

**Flexible classes as per the
student need**

**Wiley Platinum review Study
Material With 35 PDU's**

**Delphi Learning Management
system with class recording**





OUR FACULTY

Our Faculties are Industry Experienced with a work experience of 15-20 years with most of them from the top Companies. Faculties are qualified professionals with excellent academic training background.



TESTIMONIALS

ARSHIYAN SHAHID

Had a very good experience. Trainers are very professional. I really loved the whole peaceful environment. Thank you for training us so well

ANVIN ANTONY

Very good staff and very supportive

DIVYA CHACKO

Had good experience here, supportive team. the training was knowledgeable and worth





Corporates We Have Trained



حُكُومَةُ الشَّارِقَة
Government of Sharjah



هيئة كهرباء ومياه دبي
Dubai Electricity & Water Authority

FedEx®



STC
الاتصالات السعودية



بنك الخليج الأول

FGB

الإمارات الإسلامية
EMIRATES ISLAMIC

NOOR
BANK

بنك أبوظبي التجاري

ADCB

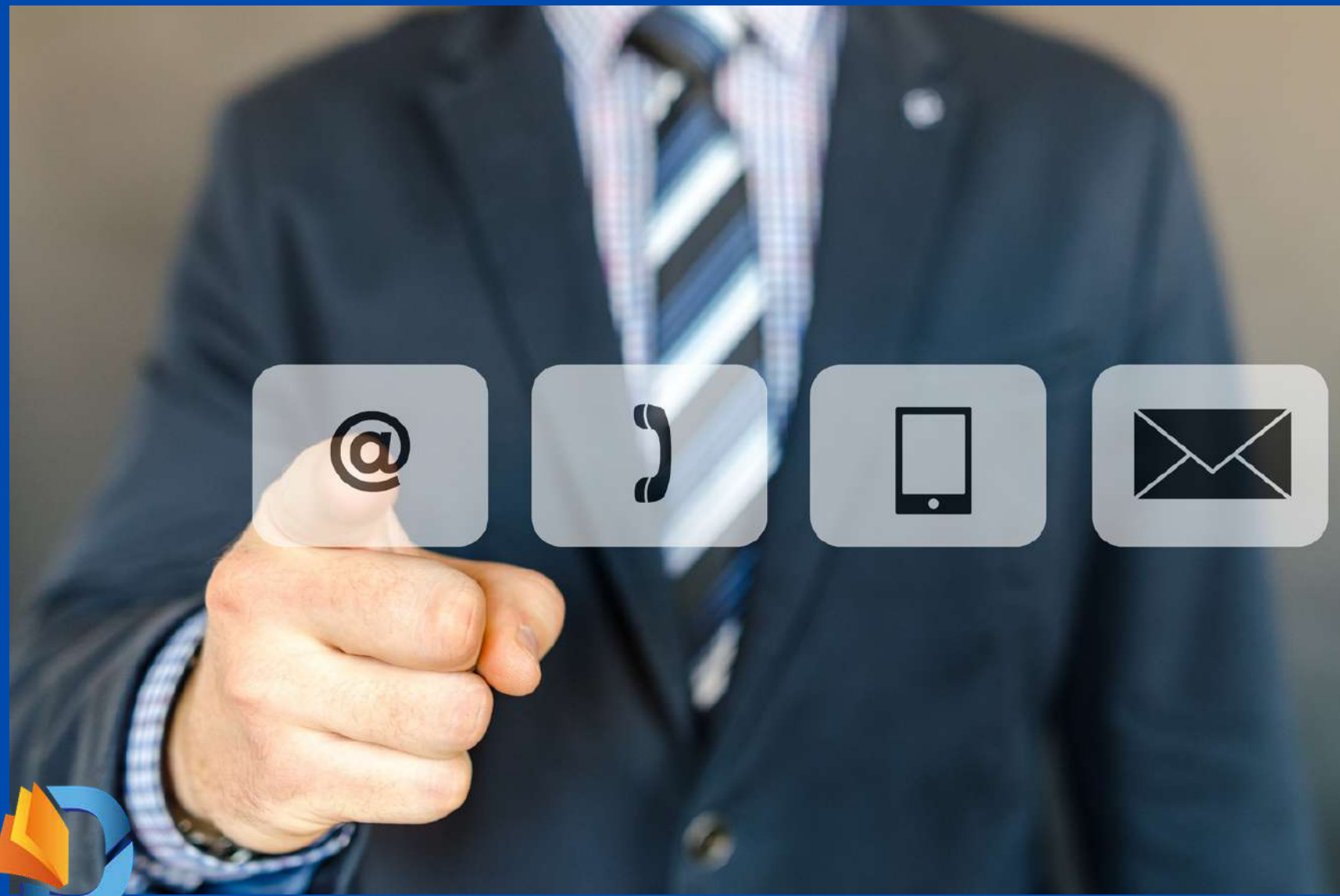


KOJAK GROUP

مجموعة السركال
AL SERKAL GROUP



REACH US ONLINE



FACEBOOK

<https://www.facebook.com/delphistartraining/>



INSTAGRAM

<https://www.instagram.com/edudelphi/>



TWITTER

<https://twitter.com/edudelphi>



LINKEDIN

<https://www.linkedin.com/company/edudelphi-training/>

MAIN OFFICE

Head Office- Hamsah Building , Block-A Unit No-402, Zabeel Street, Karama, Dubai, UAE

WEBSITE

www.edudelphi.com/ae/

EMAIL

info@edudelphi.com

WHTASAPP NUMBER

+ 971 52 908 6650

PHONE NUMBER

+971 4 3963 634

Get In Touch

